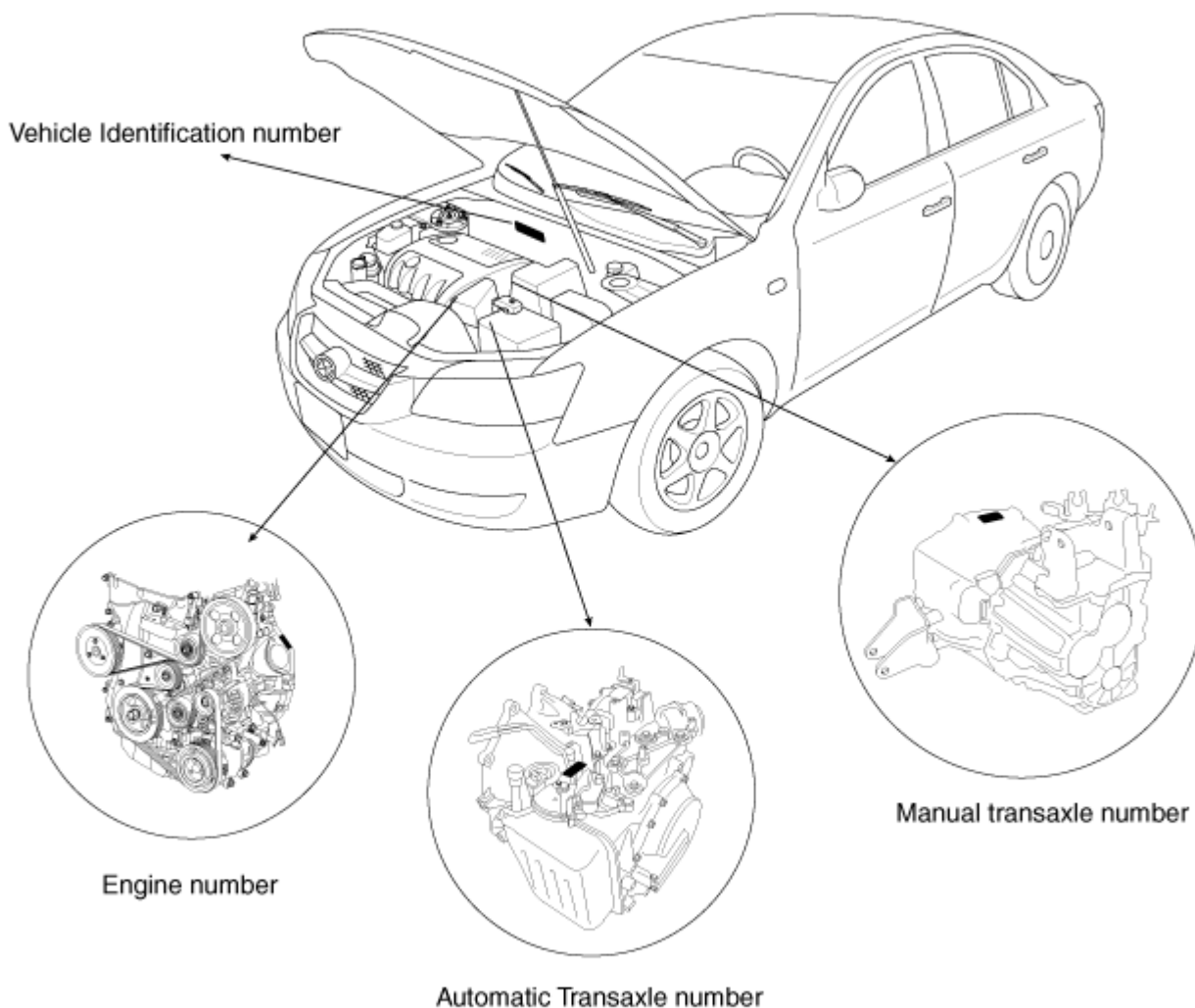


**Identification Number Locations**



**Identification Number Description**

**Vehicle Identification Number**

5	N	P	E	U	4	6	F	1	5	H	000001
1	2	3	4	5	6	7	8	9	10	11	12

1-3. World Manufacturer Identifier (WMI)  
 - 5NP : Passenger cars

4. Vehicle line
  - E : NFA
5. Model & Series
  - S : STANDARD (L)
  - T : DELUXE (GL)
  - U : SUPER DELUXE (GLS)
  - V : GRAND SALON (GDS)
  - W : SUPER GRAND SALON (HGS)
6. Body type
  - 4 : Sedan
7. Restraint system
  - 5 : Depowered airbag.
  - 6 : Advanced airbag.
8. Engine type
  - C : Gas 2.4 (θ engine, before 2008my)
  - C : Gas 2.4 (θ-II engine, after 2009my)
  - F : Gas 3.3
9. Check digit or others
10. Production year
  - 6 : 2006, 7 : 2007, 8 : 2008, 9 : 2009
11. Plant of production
  - H : Alabama in U.S.A
  - A : A-SAN (korea)
12. Vehicle production sequence number
  - 000001 ~ 999999

**Paint Code**

CODE	COLOR
EB	Ebony Black
OT	Special Color
N2	Pure Pearl white
S7	Sleek Silver
B7	Grace Beige
D2	Deep Pearl Blue
W2	Presting Dark R
D3	Aurora Blue
G6	Charming Gray

**Engine Identification Number**

1. Engine fuel
  - G : Gasoline
2. Engine range
  - 4 : 4 cycle 4 cylinder
  - 6 : 4 cycle 6 cylinder
3. Engine development order
  - K : Theta engine
  - D : Lamda engine
4. Engine capacity

- B : 3342 cc Lambda (Gasoline)
- C : 2359 cc Theta1 (Gasoline)
- E : 2359 cc Theta2 (Gasoline)

## 5. Production year

- 6 : 2006, 7 : 2007, 8 : 2008, 9 : 2009

## 6. Plant of production

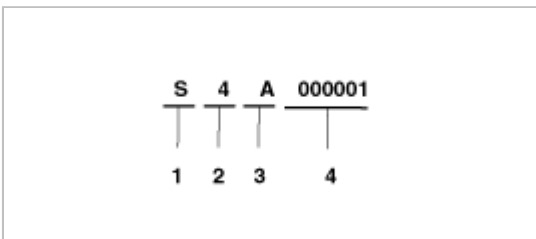
- A. A : A-SAN (Korea)
- B. K : Montgomery (HMMA)

## 7. Engine production sequence number

- 000001 ~ 999999

## Transmission Identification Number

### Manual



## 1. Model

- S : M5GF2

## 2. Production year

- 6 : 2006, 7 : 2007, 8 : 2008, 9 : 2009

## 3. Gear ratio

- A : 4.680
- B : 4.333

## 4. Transaxle production sequence number

- 000001 ~ 999999

### Automatic



## 1. Model

- N : F4A42-2
- U : A5HF1

## 2. Production year

- 6 : 2006, 7 : 2007, 8 : 2008, 9 : 2009

## 3. Gear ratio

- M : 3.770
- K : 3.333

## 4. Detailed classification

- XD : 2.4 (Theta engine)
- GD : 3.3 (Lambda engine)

## 5. Spare

## 6. Transaxle production sequence number

- 000001 ~ 999999